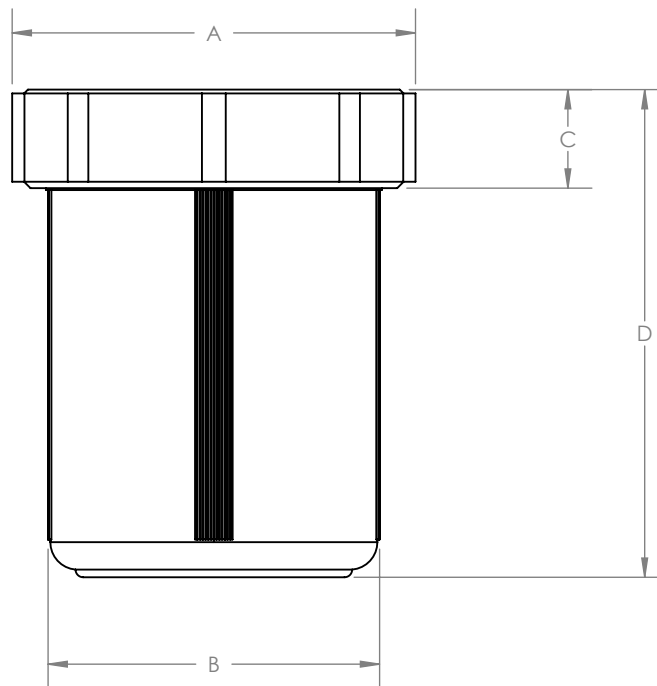


STANDARD DIMENSIONS

PART NUMBER	*PSI RATING 73°F/23°C		VOLUME	A	B	C	D
	LIQUID	GAS		INCHES (MM)	INCHES (MM)	INCHES (MM)	INCHES (MM)
100-0060-01	10 PSI	10 PSI	60 ml	2.46" (62.5)	1.99" (50.5)	0.75" (19.1)	1.95" (49.5)
100-0090-01	10 PSI	10 PSI	90 ml	2.46" (62.5)	1.98" (50.3)	0.75" (19.1)	2.70" (68.6)
100-0120-01	5 PSI	3 PSI	120 ml	3.15" (80.0)	2.61" (66.3)	0.77" (19.6)	2.15" (54.6)
100-0180-01	10 PSI	10 PSI	180 ml	3.15" (80.0)	2.59" (66.8)	0.77" (19.6)	2.98" (75.7)
100-0180-02	5 PSI	3 PSI	180 ml	2.46" (62.5)	1.99" (50.5)	0.75" (19.1)	5.01" (127.3)
100-0240-01	5 PSI	3 PSI	240 ml	3.15" (80.0)	2.59" (66.8)	0.77" (19.6)	3.81" (96.8)
100-0300-01	5 PSI	3 PSI	300 ml	3.93" (99.8)	3.37" (85.6)	0.91" (23.1)	3.10" (78.7)
100-0350-01	5 PSI	3 PSI	350 ml	4.83" (122.7)	4.21" (106.9)	1.14" (29.0)	2.55" (64.8)
100-0360-01	5 PSI	3 PSI	360 ml	4.83" (122.7)	3.34" (84.8)	1.14" (29.0)	3.57" (90.6)
100-0480-01	5 PSI	3 PSI	480 ml	3.93" (99.8)	3.36" (85.3)	0.91" (23.1)	4.54" (115.3)
100-0500-01	5 PSI	3 PSI	500 ml	3.93" (99.8)	3.37" (85.6)	0.91" (23.1)	4.78" (121.4)
100-1000-01	5 PSI	3 PSI	1000 ml	4.83" (122.7)	4.24" (107.7)	1.14" (29.0)	6.00" (152.4)
100-2000-01	5 PSI	3 PSI	2000 ml	4.83" (122.7)	4.20" (106.8)	1.14" (29.0)	10.76" (273.4)

***NOTE: CONSULT SAVILLEX FOR ELEVATED TEMPERATURE RATINGS**

***NOTE: JAR IS SHOWN WITH SAVILLEX CLOSURE FOR REFERENCE**




 10321 West 70th St.
 Eden Prairie, MN
 55344-3446 USA
 (952)935-4100

TITLE:
JAR DIMENSIONS